

MONTHLY MEMBERSHIP PROGRESS REPORT

District 321C1

Results as of: 5/31/2026

GMT:

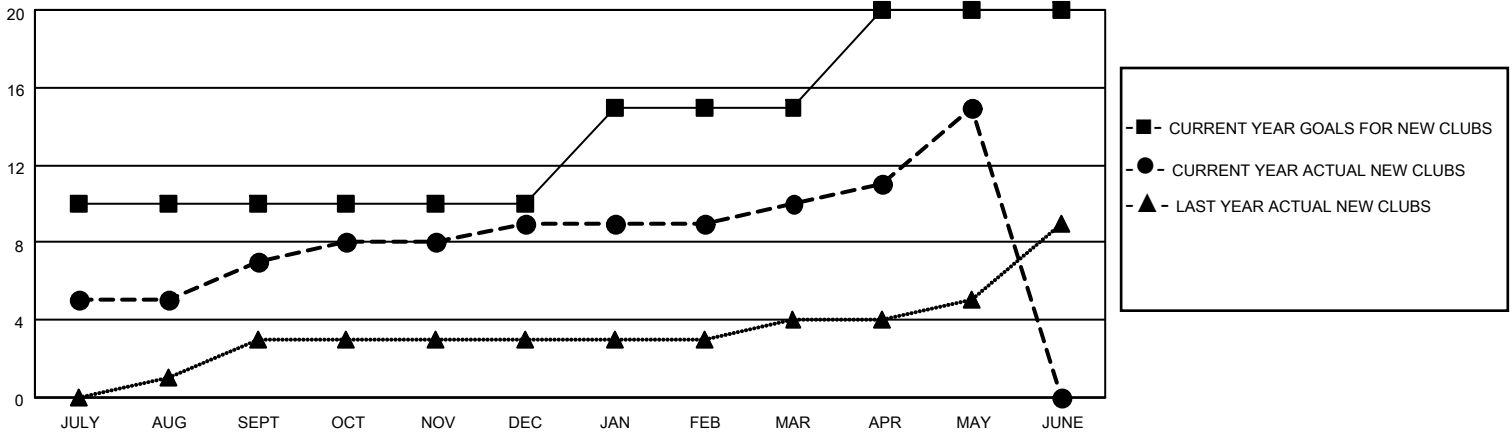
LOCATION INDIA

GMT CA

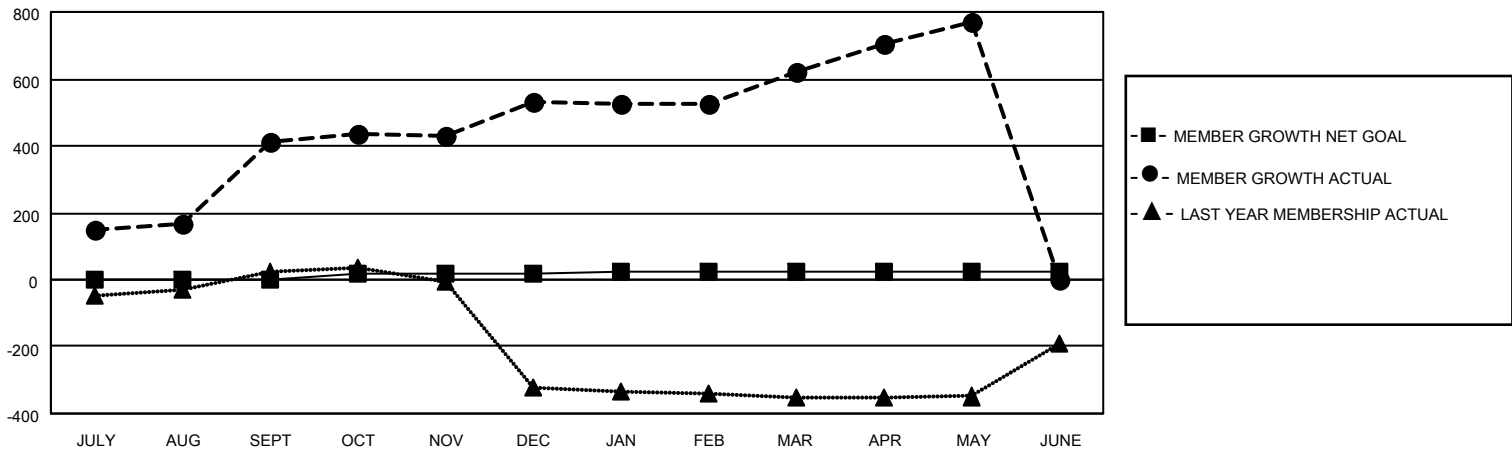
Clubs			
RESULTS FOR 2025-2026			
QUARTER	NEW CLUB GOAL	NEW CLUBS	DROPPED CLUBS
JULY/AUG/SEPT	10	7	0
OCT/NOV/DEC	0	2	2
JAN/FEB/MAR	5	1	0
APR/MAY/JUNE	5	5	0

Members			
RESULTS FOR 2025-2026			
QUARTER	MEMBER GROWTH NET GOAL	MEMBER GROWTH ACTUAL	DROPPED MEMBERS ACTUAL (including transfers)
JULY/AUG/SEPT	0	508	70
OCT/NOV/DEC	20	262	133
JAN/FEB/MAR	2	117	25
APR/MAY/JUNE	0	235	44

GOALS AND ACTUAL NEW CLUBS CUMULATIVE



GOALS AND ACTUAL MEMBERS CUMULATIVE



DROPPED CLUBS: 2 DROPPED MEMBERS DECEASED 4 CLUB CANCELLED 39 OTHER 228 TOTAL 271	142 CLUBS OF 184 ADDED 1 OR MORE NEW MEMBERS CLICK HERE FOR CUMULATIVE MEMBERSHIP DATA	GENDER DISTRIBUTION MALE 3,634 (72.29%) FEMALE 1,391 (27.67%)
	TOTAL FAMILY UNIT MEMBERS 1,621 FAMILY MEMBERS PAYING HALF DUES 961	